

# ***K W MATERIALS HANDLING INC.***

***300 Trillium Dr., Unit #11    Kitchener, Ont.    N2E 2K6***  
***Bus. 519-748-1345    sales@kwmaterials.com    Fax 519-748-1780***  
***www.OntarioIndustrial.com***

## ***NEW / USED CONTAINER INVENTORY LIST***



**USED STANDARD WIRE MESH BASKETS**  
**34.5" X 40.5" X 29" HIGH**  
**WIRE MESH SIDES & FLOOR**  
**2 DROP GATES**  
**\$109.00 EA / 100's AVAILABLE**



**USED HD WIRE MESH BASKETS**  
**34.5" X 40.5" X 32" HIGH**  
**EXCELLENT CONDITION**  
**SOLID FLOOR / MESH SIDES**  
**60 AVAILABLE \$ 189 EACH**



**H.D. WIRE MESH CONTAINERS**  
**48" X 40" X 40" HIGH / COLLAPSIBLE**  
**LIKE NEW CONDITION / ORANGE OR YELLOW**  
**2 DROP GATES / 4-WAY ENTRY**  
**\$ 229.00 EA / 100's AVAILABLE**



**COLLAPSIBLE WIRE MESH BINS**  
**MIXED COLOURS**  
**2 DIFFERENT SIZES IN STOCK**  
**DROP DOORS**  
**34" HIGH \$ 169.00 EA**  
**42" HIGH \$ 189 EACH**



**USED PLASTIC STACK & NEST TOTES**  
**21 X 12 X 7" HIGH**  
**RED, BLUE AND YELLOW**  
**NO MINIMUM ORDERS**  
**\$ 5.95 EACH / 500 AVAILABLE**



**USED HOPPER FRONT STACKING PARTS BINS**  
**VARIOUS SIZES**  
**HEAVY-DUTY CONSTRUCTION**  
**HANGING LIP ON BACK**  
**STARTING AT ONLY \$ 0.99 EACH**



**ZE13 H.D. WIRE MESH CONTAINER**  
**53" X 48" X 38" HIGH**  
**WIRE MESH SIDES AND FLOOR**  
**FORK STIRRUPS / DROP GATES**  
**\$299.00 EA ( USD ) / 300 AVAILABLE IN OHIO**



**USED GM 5131 WIRE MESH BINS**  
**54" X 44" X 40" HIGH**  
**1 DROP DOOR / GOOD CONDITION**  
**FORK STIRRUPS / PIN FEET**  
**\$ 299 EA. ( USD ) CALL FOR AVAILABILITY**



**USED COLLAPSIBLE BULK BOXES**  
**56" X 48" X 34" HIGH**  
**COME WITH DROP DOORS**  
**EXCELLENT CONDITION**  
**\$195.00 EA / 28 AVAILABLE**



**USED COLLAPSIBLE BULK BOXES**  
**48 X 45 X 25" HIGH**  
**COME WITH DROP DOORS**  
**GREAT CONDITION**  
**\$ 139.00 EA. / 40 STOCK**



**USED 32" X 30" X 25"H BULK BOXES**  
**COLLAPSIBLE / STACKABLE**  
**DROP DOORS**  
**HEAVY-DUTY**  
**\$ 119.00 EACH / 30 AVAILABLE**



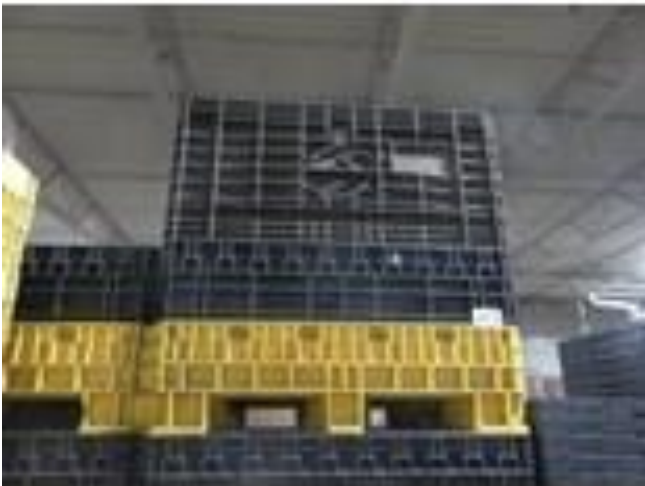
**USED COLLAPSIBLE BULK BOXES**  
**48" X 40" X 38"H**  
**3 DROP GATES / COME WITH LIDS**  
**LIKE NEW / PROFESSIONALLY CLEANED**  
**\$ 219.00 EACH / 56 STOCK**



**USED SMF-4 SOLID / VENTED BINS**  
**48" X 45" X 26" HIGH**  
**H.D SOLID STEEL BASE & SIDES**  
**PERFECT FOR SMALL PARTS**  
**\$219.00 EA U.S. DOLLARS**



**USED SMF-6 SOLID / VENTED BINS**  
**53" X 48" X 26" H**  
**H.D SOLID STEEL BASE & SIDES**  
**PERFECT FOR SMALL PARTS / STAMPINGS**  
**\$ 239 EA U.S. DOLLARS**



**USED COLLAPSIBLE BULK BOXES**  
**48 X 45 X 42" H**  
**DROP DOORS**  
**EXCELLENT CONDITION**  
**\$ 189.00 EACH / 8 STOCK**



**USED EXPANDED METAL BASKETS**  
**34.5 X 40.5 X 32" H**  
**DROP GATES / CUP FEET**  
**SOLID FLOOR / EXPANDED METAL SIDES**  
**\$ 149 EACH / 13 STOCK**

# **NEW STANDARD STACKING BIN PRICE LIST**

Size: 34-1/2"x40-1/2"  
x32-1/4" O.H.  
Capacity: 3,000 lbs. - 15 cu.  
ft.  
Solid Sheet Sides  
Solid Sheet Floor  
Two Half Drop Gates on  
Short Sides



Size: 34-1/2"x40-1/2"  
x32-1/4" O.H.  
Capacity: 2,500 lbs. - 15 cu.  
ft.  
3/4-13 Expanded Metal  
Sides  
3/4-13 Expanded Metal  
Floor  
Two Half Drop Gates on  
Short Sides



**NEW SOLID STEEL CONTAINER**  
**34.5" X 40.5" X 32" HIGH**  
**SOLID SIDES AND FLOOR**  
**DROP GATES**  
**\$ CALL FOR PRICING**

**NEW EXPANDED METAL CONTAINER**  
**34.5" X 40.5" X 32" HIGH**  
**SOLID FLOOR / EXPANDED MTL SIDES**  
**DROP GATES**  
**\$ CALL FOR PRICING**

Size 40"x48"x40" O.H.  
Capacity: 4,000 lbs. 29 cu.  
ft.  
3/4-13 Expanded Metal  
Sides  
Solid Sheet Floor  
Two Half Drop Gates on  
Short Sides  
\*Also Available in Solid  
Sheet



ORANGE  
LIGHT BLUE  
DARK GREEN  
DARK BLUE  
LIGHT GREY  
MEDIUM BLACK  
DARK GREY



ROYAL BLUE

ROYAL BLUE  
MEDIUM BLUE  
OFFWHITE  
BARN RED  
SAFETY YELLOW  
SKYWHITE

**NEW EXPANDED METAL CONTAINER**  
**48" X 40" X 40" HIGH**  
**EXPANDED METAL SIDES / SOLID FLOOR**  
**DROP GATES / 4-WAY ENTRY**  
**\$ CALL FOR PRICING**

**STANDARD NEW CONTAINER COLOURS**  
**PREMIUM POWDER COATED PAINT**  
**CUSTOM COLOURS ARE AVAILABLE**

# **NEW COLLAPSIBLE WIRE MESH BIN PRICE LIST**



MODEL	SIZE (D x W x H x overall H)	PART #	MESH	CAP**	1/2 DROP GATE
Junior	20" x 32" x 22" (16" usable)	NDWJ20322230SS000G	1/2" x 1/2"	1500	on 32" side
Medium	32" x 40" x 34" (28" usable)	NDW532403460SS000G	2" x 2"	4000	on 40" side
Senior	40" x 48" x 36" (30" usable)	NDW540483660SS000G	2" x 2"	4000	on 48" side
Extra Large	40" x 48" x 42" (36" usable)	NDW540484260SS000G	2" x 2"	4000	on 48" side
Caster Kit	Caster Add-On	NDCKPU4EC4	4" - 2 swivel w/ brake + 2 rigid		

Price Each
<b>\$ 134.00</b>
<b>\$ 189.00</b>
<b>\$ 269.00</b>
<b>\$ 289.00</b>
<b>\$ 129.00</b>

**\*CASTER KIT PRICING INCLUDES FACTORY INSTALLATION**

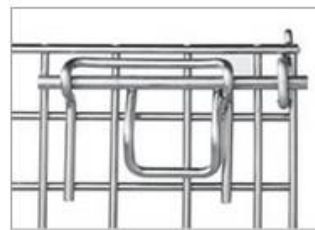
## ROBOTICALLY WELDED AND PRECISION FORMED INDUSTRIAL WIRE CONTAINERS



CHANNELS



FEET



HANDLES



WIRE HELIX

**FEAT**

- › Collapsible and stackable design
- › High-quality electro-galvanized finish
- › Standard 1/2 front drop gate
- › Robotically welded feet and understructure
- › Heavy-duty locking handle design
- › Precision welded 2" x 2" - 2 ga. wire mesh pattern (Junior: 1/2" x 1/2" - 11 ga.)
- › 48-hour quick ship
- › Custom designs and finishes
- › Four sizes in stock:
  - Junior (20"D x 32"W x 22"OH)
  - Medium (32"D x 40"W x 34"OH)
  - Senior (40"D x 48"W x 36"OH)
  - XL (40"D x 48"W x 42"OH)

**ADDITIONAL INDUSTRIAL WIRE BASKET ACCESSORIES**

- Full drop gate
- Swing gate
- Dividers\*
- Hinged lid\*
- Stacking guides
- Fork pockets
- Fork stirrups
- 4-way runners
- Removable lid
- Collapsible rigid design

\* In-stock options



JUNIOR BASKET



XL BASKET



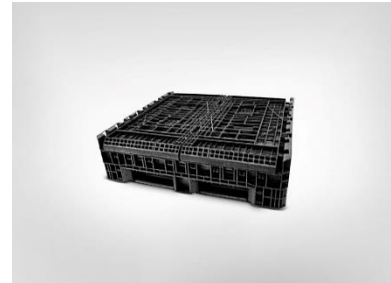
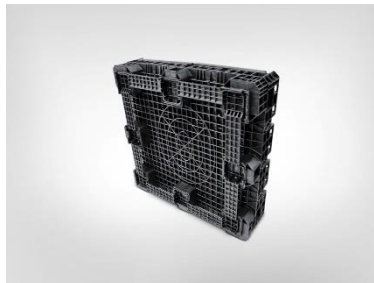
DIVIDER\*



HINGED LID\*

# **NEW PLASTIC COLLAPSIBLE BULK BIN PRICE LIST**

KW Materials Handling has the largest selection of collapsible bulk containers. Collapsible pallet containers are used primarily for storage, protection, work in process, and distribution throughout the automotive, food, electronics, aerospace, communications, appliances, and logistics industries. KW Materials Handling has a container specifically for your handling requirements. We can supply new or used collapsible bulk containers based on your application and budget.



## Container Models

- TDP 3230-25
- TDP 3230-34
- TDP 4840-34
- TDP 4845-25
- TDP 4845-34
- TDP 4845-42
- TDP 4845-50
- TDP 4845-25 EXT STORAGE BOTTOM
- TDP 6448-34
- TDP 7048-34
- ➔ TDP 3230 Top Cap
- ➔ TDP 4845 Top Cap

## Price each

\$ 179 each

\$ 209 each

\$ 329 each

\$ 289 each

\$ 319 each

\$ 389 each

\$ 439 each

Call for pricing

Call for pricing

Call for pricing

\$ 79 each

\$ 79 each

## Product Superiority

- All plastic design
- Highest return ratio of any container on the market: 84 full, 252 collapsed of our best selling TDP 4548-34
- Integral Grab Handles
- Knuckle Wall Stabilizers
- 2 Door / 2 Placards Standard
- One year manufacturing warranty
- Available in industry-standard footprints
- Smooth interior walls for applications utilizing interior dunnage
- No welded parts on standard containers for a stronger, more durable product
- Fewer moving parts for less wear and tear

### ADDITIONAL DIMENSIONAL REFERENCE

PRODUCT	Fork Opening Long Side	Fork Opening Short Side	53' Trailer Capacity Collapsed	53' Trailer Capacity Assembled
TDP 3230-25	3.38" x 10.25"	2.25" x 7.3"	420	240
TDP 3230-34	3.38" x 10.25"	2.25" x 7.3"	420	180
TDP 4840-34	3.75" x 11.75"	4.25" x 11.50"	270	90
TDP 4845-25	3.5" x 11.75"	3.5" x 10.3"	252	112
TDP 4845-34	3.5" x 11.75"	3.5" x 10.3"	252	84
TDP 4845-42	3.5" x 11.75"	3.5" x 10.3"	140	56
TDP 4845-50	3.5" x 11.75"	3.5" x 10.3"	84	56
TDP 4845-34 Storage Bottom	3.5" x 11.75"	3.5" x 10.3"	140	84
TDP 4845 Top Cap	N/A	N/A	N/A	N/A
TDP 3230 Top Cap	N/A	N/A	N/A	N/A

All dimensions are approximate. Dimensions and performance characteristics are often affected by substantial temperature variations and various handling methods.

***\*Quantity discounts available. Prices subject to change. Delivery charges extra***

## **NEW STACKING RACK PRICE LIST**



**DIMENSIONS = 48" X 48" X 69"H**  
**61" CLEAR HEIGHT**  
**2500 LB. CAPACITY**  
**REMOVABLE POSTS WITH TARGETS**  
**WIRE MESH DECK**  
**\$ 269.00 EA. QTY DISCOUNTS**



**DIMENSIONS = 72" X 48" X 69"H**  
**60" CLEAR HEIGHT**  
**3000 LB. CAPACITY**  
**REMOVABLE POSTS WITH TARGETS**  
**WIRE MESH DECK**  
**CONTACT FOR PRICING**



**DIMENSIONS = 48" X 48" X 69"H**  
**61" CLEAR HEIGHT**  
**2500 LB. CAPACITY**  
**REMOVABLE POSTS WITH TARGETS**  
**WIRE MESH DECK**  
**CONTACT FOR PRICING**



**WE MAKE CUSTOM STACKING RACKS**  
**ALL SIZES AND STYLES AVAILABLE**  
**CONTACT US TODAY FOR A QUOTE**  
**NO MINIMUM ORDER QUANTITIES**

**\*PRICES ARE F.O.B. MANUFACTURER / SHIPPING EXTRA**



## **NEW SELF DUMPING HOPPER PRICE LIST**



**SD14 | SD12 | SD34 | SD100 | SD150 | SD200 | SD250 | SD300 | SD500**

**Click here for a side by side comparison of the available models**

Capacity Cu. Yards	Model	Weight with no extras	Height	Overall Width	Overall Length	Fork Width	Bottom & Side Thickness	Dumping Angle
1/4	SD14	250 lbs.	25-3/8	26-1/2	49-1/4	16	10 ga.	40 degrees
1/2	SD12	380 lbs.	32	40-1/2	49-1/4	29-7/8	10 ga.	40 degrees
3/4	SD34	440 lbs.	35-1/2	41	59	29-7/8	10 ga.	40 degrees
1	SD100	505 lbs.	40-3/4	41	62-1/2	29-7/8	10 ga.	40 degrees
1-1/2	SD150	715 lbs.	43-3/4	47-1/2	72-1/4	36-1/2	3/16 ga.	40 degrees
2	SD200	920 lbs.	42-1/2	65	72	54-3/4	3/16 ga.	40 degrees
2-1/2	SD250	930 lbs.	47-1/4	65	76	53-1/2	3/16 ga.	40 degrees
3	SD300	1055 lbs.	47-1/4	76	76	64-1/2	3/16 ga.	40 degrees

<b>SIZE</b>	<b>1 - 4 PCS</b>	<b>5 - 9 PCS</b>	<b>10+ PCS</b>
<b>SD14</b>	<b>\$709.00 each</b>	<b>\$689.00 each</b>	<b>\$659.00 each</b>
<b>SD12</b>	<b>\$849.00 each</b>	<b>\$819.00 each</b>	<b>\$789.00 each</b>
<b>SD34</b>	<b>\$919.00 each</b>	<b>\$889.00 each</b>	<b>\$859.00 each</b>
<b>SD100</b>	<b>\$1009.00 each</b>	<b>\$979.00 each</b>	<b>\$939.00 each</b>
<b>SD150</b>	<b>\$1259.00 each</b>	<b>\$1219.00 each</b>	<b>\$1169.00 each</b>
<b>SD200</b>	<b>\$1639.00 each</b>	<b>\$1569.00 each</b>	<b>\$1519.00 each</b>
<b>SD250</b>	<b>\$1919.00 each</b>	<b>\$1849.00 each</b>	<b>\$1789.00 each</b>
<b>SD300</b>	<b>\$2139.00 each</b>	<b>\$2069.00 each</b>	<b>\$1989.00 each</b>

**CASTER KIT ( factory assembled ) – 2 Rigid & 2 Swivel Phenolic Wheels**

<b>SIZE / CAPACITY</b>	<b>1 - 4 PCS</b>	<b>5 - 9 PCS</b>	<b>10+ PCS</b>
<b>4" X 2" 3200 LB. CAPACITY</b>	<b>\$169.00 each</b>	<b>\$165.00 each</b>	<b>\$159.00 each</b>
<b>5" X 2" 4000 LB. CAPACITY</b>	<b>\$189.00 each</b>	<b>\$185.00 each</b>	<b>\$179.00 each</b>
<b>6" X 2" 4800 LB. CAPACITY</b>	<b>\$209.00 each</b>	<b>\$205.00 each</b>	<b>\$199.00 each</b>
<b>8" X 2" 5000 LB. CAPACITY</b>	<b>\$229.00 each</b>	<b>\$225.00 each</b>	<b>\$219.00 each</b>

**K W Materials Handling Inc. 519-748-1345**

**sales@kwmaterials.com**

**www.OntarioIndustrial.com**

**888-894-2555**

**www.SelfDumpingHopper.ca**

# **KWIK-STOR PORTABLE STORAGE CONTAINER PRICE LIST**

## **HALF DEEP CONTAINER**



Exterior Dimensions: 81 x 44.5 x 87.5 h  
Interior Dimensions: 75.5 x 39 x 78 h  
Door Opening: 50 x 76.5  
Weight: 480 lbs. .  
Capacity: 2000 lbs.

**\$ 1129.00**

## **STANDARD CONTAINER**



Exterior Dimensions: 81 x 86 x 87.5 h  
Interior Dimensions: 75.5 x 80.5 x 78 h  
Door Opening: 50 x 76.5  
Weight: 700 lbs. .  
Capacity: 4000 lbs.

**\$ 1479.00**

## **1.5 DEEP CONTAINER**



Exterior Dimensions: 81 x 130.5 x 87.5 h  
Interior Dimensions: 75.5 x 124 x 78 h  
Door Opening: 50 x 76.5  
Weight: 1000 lbs. .  
Capacity: 6000 lbs.

**\$ 2259.00**

## **DOUBLE DEEP CONTAINER**



Exterior Dimensions: 81 x 172 x 87.5 h  
Interior Dimensions: 75.5 x 165 x 78 h  
Door Opening: 50 x 76.5  
Weight: 1250 lbs. .  
Capacity: 8000 lbs.

**\$ 2609.00**

*Our inventory of used is constantly changing and we don't post all sizes so if you are looking for a particular size or style of container, let us know.*

***NEW & USED***

***BUY & SELL***



***K W MATERIALS HANDLING INC.***  
***519-748-1345 OntarioIndustrial.com***

***K W MATERIALS HANDLING INC.***  
***300 Trillium Dr., Unit #11 Kitchener, Ont. N2E 2K6***  
***Bus. 519-748-1345 Fax 519-748-1780***  
***OUR PRODUCT IS SERVICE TO YOU!***  
***[WWW.ONTARIOINDUSTRIAL.COM](http://WWW.ONTARIOINDUSTRIAL.COM)***